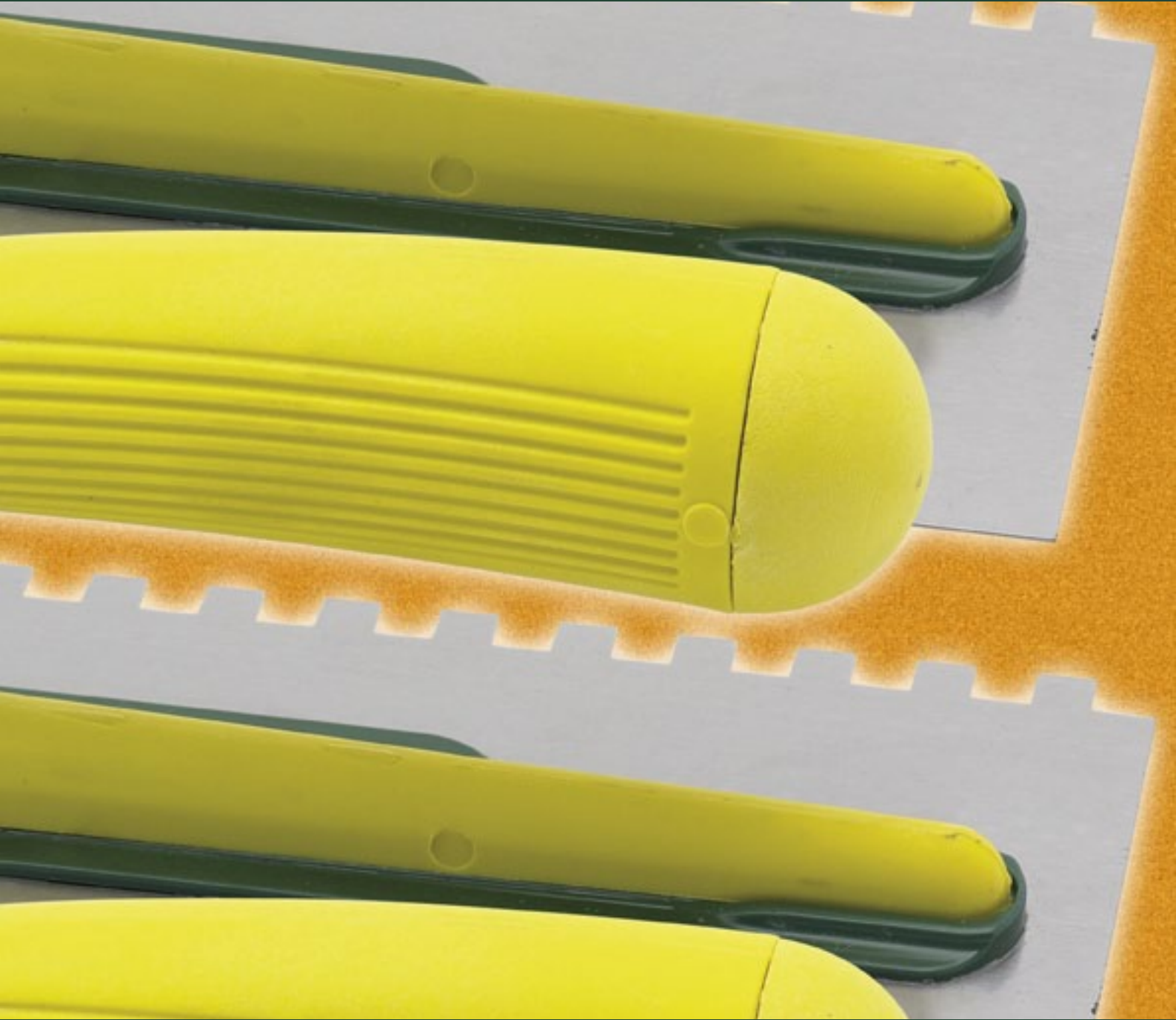


SVEDEN



Frattoni
Plastering trowels
Platoirs



- Frattone tipo U.S.A. manico NYLON
- Plastering trowel U.S.A. model with NYLON handle
- Platoir type U.S.A. en acier manche en NYLON



15000

12 × 28

6



- Frattone INOX serie tipo U.S.A. manico NYLON
- Plastering trowel stainless steel type
- U.S.A. with NYLON handle
- Platoir type U.S.A. en INOX manche en NYLON



15010

12 × 28

6



- Frattone tipo U.S.A. dentato manico NYLON
- Notched plastering trowel type U.S.A. with NYLON handle
- Platoir type U.S.A. en acier denté manche en NYLON

ART	cm	mm	
15100	12 × 28	6 × 6	6
15105	12 × 28	8 × 8	6
15110	12 × 28	10 × 10	6
15120	12 × 28	12 × 12	6



- Frattone INOX tipo U.S.A. dentato manico NYLON
- Notched stainless steel plastering trowel type U.S.A. with NYLON handle
- Platoir type U.S.A. en INOX denté manche en NYLON

ART	cm	mm	
15130	12 × 28	6 × 6	6
15135	12 × 28	8 × 8	6
15140	12 × 28	10 × 10	6
15150	12 × 28	12 × 12	6



- Frattone tipo U.S.A. dentato sinistro manico NYLON
- Notched left plastering trowel type U.S.A. with NYLON handle
- Platoir type U.S.A. en acier denté gauche manche en NYLON

ART	cm	mm	
15101	12 × 28	6 × 6	6
15106	12 × 28	8 × 8	6
15116	12 × 28	10 × 10	6
15121	12 × 28	12 × 12	6



- Frattone INOX tipo U.S.A. dentato sinistro manico NYLON
- Notched left stainless steel plastering trowel type U.S.A. with NYLON handle
- Platoir type U.S.A. en INOX denté gauche manche en NYLON

ART	cm	mm	
15131	12 × 28	6 × 6	6
15136	12 × 28	8 × 8	6
15141	12 × 28	10 × 10	6
15151	12 × 28	12 × 12	6



- Frattone tipo U.S.A. manico legno
- Steel plastering trowel type U.S.A. wooden handle
- Platoir type U.S.A. en acier manche bois

ART	CM	CM	ART
16000	12 × 28		6



- Frattone INOX tipo U.S.A. manico legno
- INOX plastering trowel type U.S.A. wooden handle
- Platoir type U.S.A. en INOX manche bois

ART	CM	CM	ART
16010	12 × 28		6



- Frattone tipo U.S.A. dentato manico legno
- Notched steel plastering trowel type U.S.A. wooden handle
- Platoir type U.S.A. en acier denté manche bois

ART	CM	mm	ART
16100	12 × 28	6 × 6	6
16105	12 × 28	8 × 8	6
16110	12 × 28	10 × 10	6
16120	12 × 28	12 × 12	6



- Frattone INOX tipo U.S.A. dentato manico legno
- Notched INOX plastering trowel type U.S.A. wooden handle
- Platoir type U.S.A. en INOX denté manche bois

ART	CM	mm	ART
16130	12 × 28	6 × 6	6
16135	12 × 28	8 × 8	6
16140	12 × 28	10 × 10	6
16150	12 × 28	12 × 12	6



SINTEX PLUS



- Frattone tipo U.S.A. manico SINTEX PLUS
- Steel plastering trowel type U.S.A. SINTEX PLUS handle
- Platoir type U.S.A. en acier manche SINTEX PLUS

ART.	cm	cm	
16001	12 × 28		6



SINTEX PLUS



- Frattone INOX tipo U.S.A. manico SINTEX PLUS
- INOX plastering trowel type U.S.A. SINTEX PLUS handle
- Platoir type U.S.A. en INOX manche SINTEX PLUS

ART.	cm	cm	
16011	12 × 28		6



SINTEX PLUS



- Frattone tipo U.S.A. dentato manico SINTEX PLUS
- Notched steel plastering trowel type
- U.S.A. SINTEX PLUS handle
- Platoir type U.S.A. en acier denté manche SINTEX PLUS

ART.	cm	mm	
16101	12 × 28	6 × 6	6
16106	12 × 28	8 × 8	6
16111	12 × 28	10 × 10	6
16121	12 × 28	12 × 12	6



SINTEX PLUS



- Frattone INOX tipo U.S.A. dentato manico SINTEX PLUS
- Notched INOX plastering trowel type
- U.S.A. SINTEX PLUS handle
- Platoir type U.S.A. en INOX denté manche SINTEX PLUS

ART.	cm	mm	
16131	12 × 28	6 × 6	6
16136	12 × 28	8 × 8	6
16141	12 × 28	10 × 10	6
16151	12 × 28	12 × 12	6



- Frattone INOX trapezoidale manico legno
- Trapezoidal INOX plastering trowel wooden handle
- Platoir trapezoidal en INOX manche bois

ART	CM	
15550	8 × 20	10
15570	10 × 24	8
15580	12 × 28	6



- Frattone INOX rettangolare angoli arrotondati
- Rectangular INOX plastering trowel round angles
- Platoir rectangulaire INOX angles arrondi

ART	CM	
15560	8 × 20	10
15563	10 × 24	8
15565	12 × 28	6



- Frattone INOX trapezoidale manico SINTEX PLUS
- Trapezoidal INOX plastering trowel SINTEX PLUS handle
- Platoir trapezoidal en INOX manche SINTEX PLUS

ART	CM	
15551	8 × 20	10
15571	10 × 24	8
15581	12 × 28	6



- Frattone INOX rettangolare angoli arrotondati SINTEX PLUS
- Rectangular INOX plastering trowel round angles SINTEX PLUS
- Platoir rectangulaire INOX angles arrondi SINTEX PLUS

ART	CM	
15561	8 × 20	10
15564	10 × 24	8
15566	12 × 28	6



- Frattone due mani
- Two hands plastering trowel
- Platoir deux mains

ART.	cm	cm	
16200	14 × 50		6



- Frattone INOX due mani
- Two hands plastering trowel with INOX base
- Platoir deux mains avec base INOX

ART.	cm	cm	
16205	14 × 50		6



- Frattone due mani dentato
- Two hands notched plastering trowel with steel base
- Platoir deux mains denté avec base acier

ART.	cm	mm	
16280	14 × 50	6 × 6	6
16290	14 × 50	8 × 8	6
16300	14 × 50	10 × 10	6
16310	14 × 50	12 × 12	6



- Frattone INOX due mani dentato
- Two hands notched plastering trowel with INOX base
- Platoir deux mains denté avec base INOX

ART.	cm	mm	
16285	14 × 50	6 × 6	6
16295	14 × 50	8 × 8	6
16305	14 × 50	10 × 10	6
16315	14 × 50	12 × 12	6



- Frattone spagnolo liscio
- Spanish plastering trowel with steel base
- Platoir espagnole avec base acier

ART.	CM	CM	CTM
16152	INOX	30 × 15	6
16160		30 × 15	6



- Frattone spagnolo dentato
- Notched spanish plastering trowel
- Platoir espagnol denté

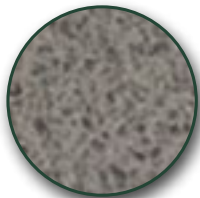
ART.	CM	CM	CTM
16166	27 × 13,5	8 × 8	6
16167	27 × 13,5	10 × 10	6



- Frattone tipo U.S.A. mignon manico legno
- Little plastering trowel type U.S.A. wooden handle
- Petit platoir type U.S.A. en acier manche bois

ART.	CM	CTM
15405	8 × 20	10
15425	10 × 24	8





- Frattone gommaspugna base plastica
- Foam-rubber plastering trowel with plastic base
- Platoir plastique eponge caoutchouc

ART.	cm	
16500	14 × 14	12
16505	10 × 24	12
16510	14 × 22	12
16515	10 × 20	12



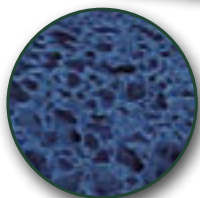
- Frattone gommaspugna fine base plastica
- Fine cells foam-rubber plastering trowel with plastic base
- Platoir plastique eponge caoutchouc fine

ART.	cm	
16750	14 × 28	12
16770	10 × 24	12



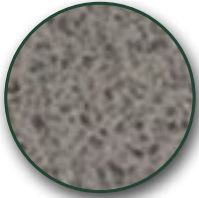
- Frattone gommaspugna grossa base plastica
- Big cells foam-rubber plastering trowel with plastic base
- Platoir plastique eponge caoutchouc grosse

ART.	cm	
16760	14 × 28	12
16780	10 × 24	12



- Frattone gommaspugna blu base plastica
- Blue foam-rubber plastering trowel with plastic base
- Platoir plastique eponge caoutchouc blue

ART.	cm	
16830	22 × 14	12
16835	10 × 24	12
16840	38 × 7	12



- Frattone gommaspugna grigia base alluminio
- Grey foam-rubber plastering trowel with aluminium base
- Platoir alu eponge gris caoutchouc

ART	CM	
16700	14 × 21	12
16710	10 × 24	12
16720	7 × 40	6
16730	14 × 14	12



- Frattone gommaspugna rossa base alluminio
- Red foam-rubber plastering trowel with aluminium base
- Platoir alu eponge rouge caoutchouc

ART	CM	
16800	14 × 21	12
16810	10 × 24	12
16820	7 × 40	6
16825	14 × 14	12



- Frattone angolare gommapiuma
- Angular foam-rubber plastering trowel
- Platoir angule eponge

ART	CM	
16900	35 × 7 × 5	6



- Frattone tipo U.S.A. base plastica bianca manico ABS
- Plastering trowel type U.S.A. white plastic base - ABS handle
- Platoir type U.S.A. lame plastique blanche manche ABS

ART.	cm	
15500	13 × 28	6



- Frattone tipo U.S.A. base plastica rossa manico ABS
- Plastering trowel type U.S.A. red plastic base - ABS handle
- Platoir type U.S.A. lame plastique rouge manche ABS

ART.	cm	
15510	13 × 28	6



- Frattone in plastica
- Plastic plastering trowel
- Platoir en plastique

ART.	cm	
17000	14 × 44	6
17010	26 × 42	6
17020	27 × 35	6
17030	30 × 42	6
17040	18 × 27	6



- Frattone in plastica a punta
- Plastic plastering trowel pointed
- Platoir en plastique pointu

ART.	cm	
17045	18 × 27	6



- Frattone in plastica manico decentrato
- Plastic plastering trowel with decentralised handle
- Platoir en plastique decentre

ART	CM	
17050	30 × 42	6



- Frattone in poliuretano
- Polyurethane plastering trowel
- Platoir en polyurethane

ART	CM	
17100	14 × 40	6
17103	14 × 28	6
17105	40 × 30	6
17110	25 × 40	6
17115	22 × 40	6



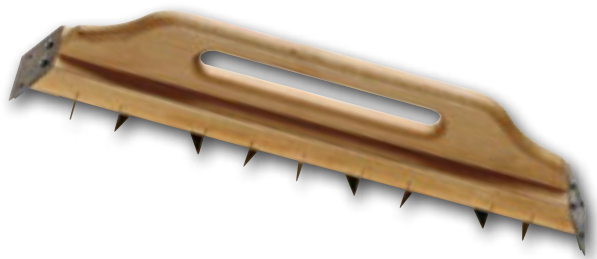
- Frattone in legnomultistrato
- Multi-layer wooden plasterin trowel
- Platoir en bois extra

ART	CM	
17500	14 × 40	6
17510	24 × 40	6



- Frattone in legno
- Wooden plastering trowel
- Platoir en bois

ART	CM	
17600	14 × 44	6
17610	19 × 39	6
17620	26 × 42	6
17630	28 × 38	6
17640	7 × 42	6
17650	26 × 65	6



- Piella per gesso rabot
- Plastering plane
- Guillaume de platrier

16400	7 x 48	6



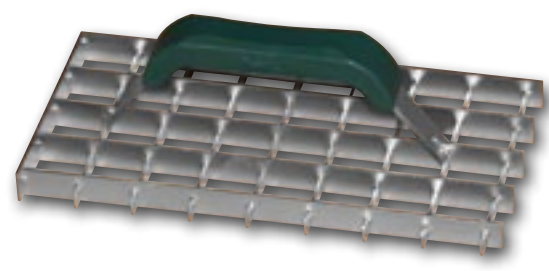
- Piella in alluminio
- Aluminium plane
- Guillaume en aluminium

16450	7 x 47	6



- Raschiatore per intonaco manico plastica
- Plastering scraper plastic handle
- Platoir grattoir manche en plastique

16420	25 x 14	4	
16421	25 x 14	12	



- Frattone a griglia zincato manico plastica
- Frame style plastering trowel zinc plated
- Grille rabot

16455	28 x 14	6



- Stadia alluminio
- Aluminium levelling staff
- Regle de macon

ART	cm	mm		
41000	150	30 × 60	5	
41010	200	30 × 60	5	
41020	250	30 × 60	5	
41030	300	30 × 60	5	
41040	350	30 × 60	5	
41050	400	30 × 60	5	
41100	200	40 × 80	3	
41110	250	40 × 80	3	
41120	300	40 × 80	3	
41130	350	40 × 80	3	
41140	400	40 × 80	3	
41150	200	50 × 50	4	
41160	250	50 × 50	4	
41170	300	50 × 50	4	
41180	400	50 × 50	4	
41200	150	20 × 80	5	
41210	200	20 × 80	5	
41220	250	20 × 80	5	
41230	300	20 × 80	5	
41240	350	20 × 80	5	
41250	400	20 × 80	5	
41300	200	25 × 100	5	
41310	250	25 × 100	5	
41320	300	25 × 100	5	
41330	350	25 × 100	5	
41340	400	25 × 100	5	
41350	150	profilo H	4	
41360	200	profilo H	4	
41370	250	profilo H	4	
41450	100	a smusso	4	
41460	150	a smusso	4	
41470	200	a smusso	4	
41480	250	a smusso	4	
41490	300	a smusso	4	



- Stadia angolo interno
- Internal angle staff
- Regle angulee interieure

ART	cm	
41400	70	6



- Stadia angolo esterno
- External angle staff
- Regle angulee exterieure

ART	cm	
41410	70	6