



Application

- It is applicable to household water supply, equipment support, pipeline pressurization, garden watering, vegetable greenhouse watering, fish farming and poultry raising, industrial and mining, water supply and drainage of enterprises and high-rise buildings, central air conditioner and centralized heating circulation system, etc.

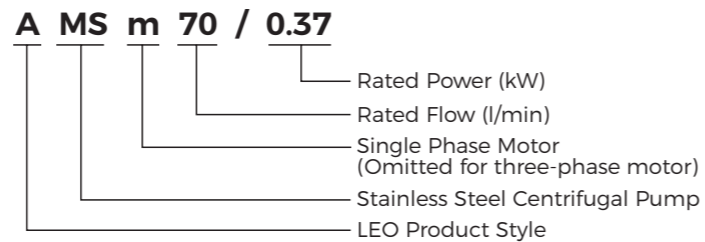
Pump

- AISI 304 pump body
- AISI 304 shaft
- Max. operating pressure: 4.5 bar
- Max. liquid temperature: +85°C
- Altitude: up to 1000 m

Motor

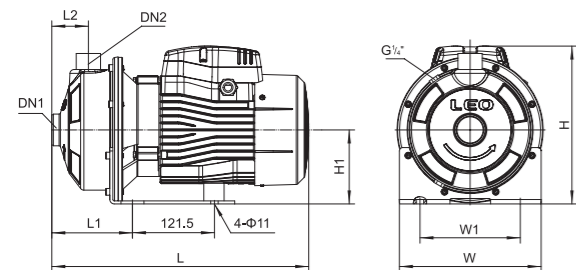
- IE2 motor
- Low noise&Long life bearing
- Motor with copper winding
- Built-in thermal protector for single phase motor
- Insulation class: F
- Enclosures class: IPX4
- Max. ambient temperature: +40°C

Identification Codes



Technical Data

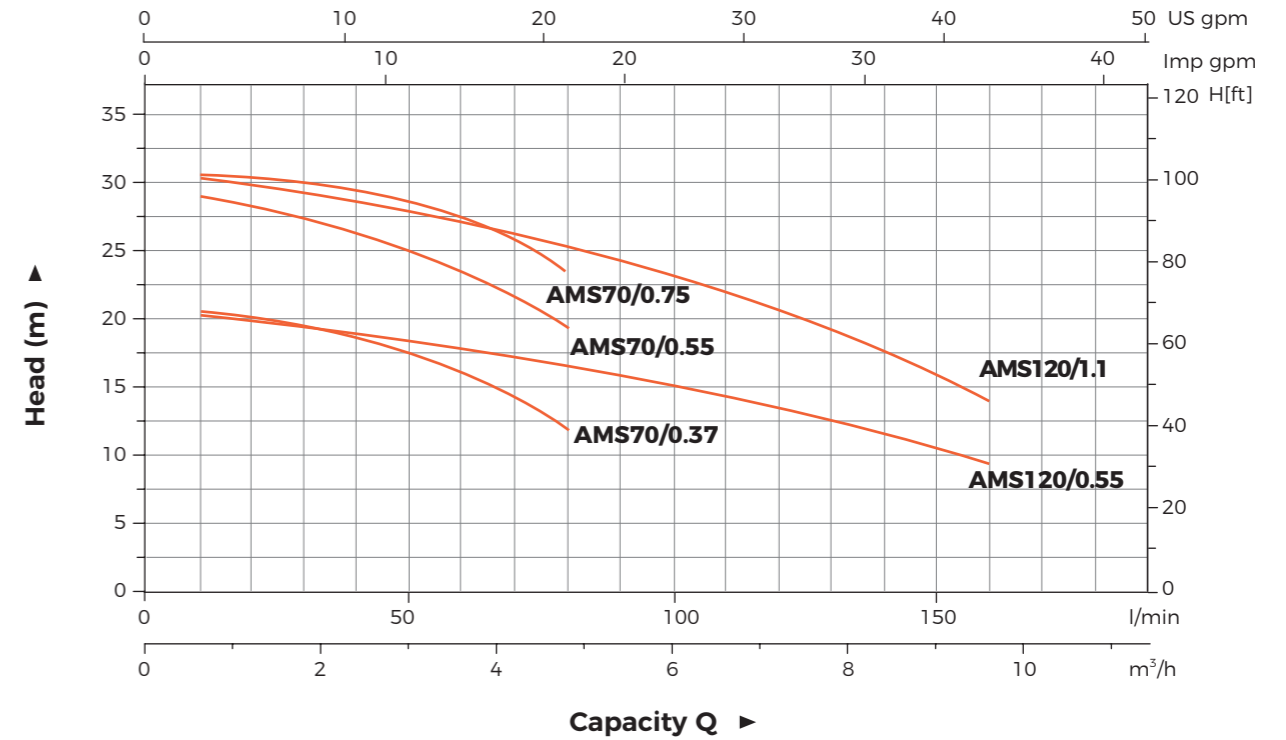
Model		Power		Q(m³/h)																			
Single Phase	Three Phase	kW	HP	0	1.8	2.4	3.6	4.8	6	7.2	8.4	9.6	10.8										
				Q(l/min)	0	30	40	60	80	100	120	140	160	180									
AMSm70/0.37	AMS70/0.37	0.37	0.5	H (m)	20.9	19	18.1	15.7	12.1	-	-	-	-	-									
AMSm70/0.55	AMS70/0.55	0.55	0.75		29.5	27.3	26.3	23.4	19.1	-	-	-	-	-									
AMSm70/0.75	AMS70/0.75	0.75	1.0		30.4	28.5	27.8	26	23	-	-	-	-	-									
AMSm120/0.55	AMS120/0.55	0.55	0.75		20.2	-	-	17.9	16.6	15.1	13.3	11.2	8.7	-									
AMSm120/1.1	AMS120/1.1	1.1	1.5		30.2	-	-	26.7	25.1	23.3	21.2	19	16.4	-									



Dimension

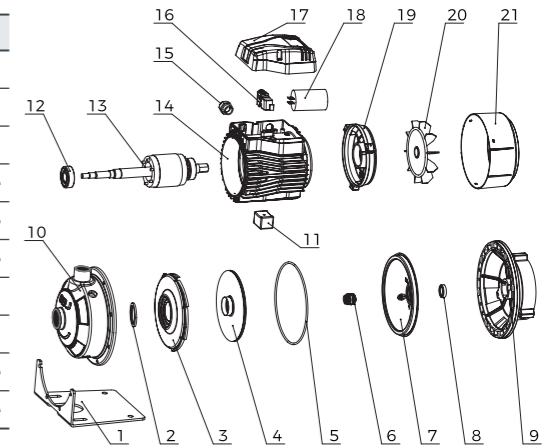
Model	DN1	DN2	L (mm)	W (mm)	H (mm)	L1 (mm)	L2 (mm)	W1 (mm)	H1 (mm)
AMS(m)70/0.37	1 1/4"	1"	332	210	224	119	55	149	110
AMS(m)70/0.55			332	210	224	119	55	149	110
AMS(m)70/0.75			381	210	224	119	55	149	110
AMS(m)120/0.55			332	210	224	119	55	149	110
AMS(m)120/1.1			381	210	234	119	55	149	110

Hydraulic Performance Curves



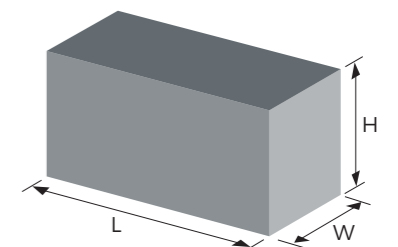
Material Table

No.	Part	Material	No.	Part	Material
1	Support base	Q235	12	Deep Groove Ball Bearings	
2	Impeller sealing ring	Rubber code	13	Rotor	
3	Diffuser	AISI304	14	Stator	
4	Impeller	AISI304	15	Outlet	Plastic code
5	Q-ring	Rubber code	16	Terminal block/terminal	Plastic code
6	Hechanical seal	Graphite/SiC	17	Terminal box	Plastic code
7	Bracket cover	AISI304	18	Capacitance	
8	Rotary lip seal	Rubber code	19	Rear cover	Aluminum
9	Bracket	Aluminum	20	Fan	Plastic code
10	Pump body	AISI304	21	Fan cover	Plastic code
11	Supporting foot	Rubber code			



Package Information

Model	GW (Kgs)	L (mm)	W (mm)	H (mm)	Quantity (PCS/20'TEU)
AMS(m)70/0.37	10	380	240	270	1200
AMS(m)70/0.55	11	380	240	270	1200
AMS(m)70/0.75	14	410	240	270	1104
AMS(m)120/0.55	11	380	240	270	1200
AMS(m)120/1.1	15	410	240	270	1104





Application

- It is applicable to household water supply, equipment support, pipeline pressurization, garden watering, vegetable greenhouse watering, fish farming and poultry raising, industrial and mining, water supply and drainage of enterprises and high-rise buildings, central air conditioner and centralized heating circulation system, etc.

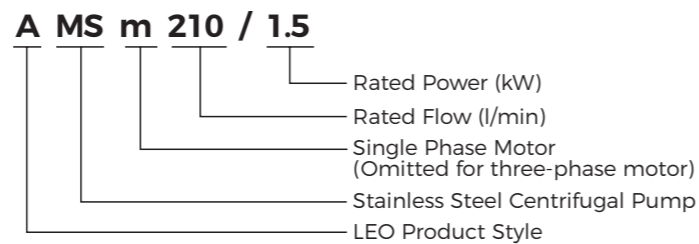
Pump

- AISI 304 pump body
- AISI 304 shaft
- Max. operating pressure: 4.5 bar
- Max. liquid temperature: +85°C
- Altitude: up to 1000 m

Motor

- IE2 motor
- Low noise & Long life bearing
- Motor with copper winding
- Built-in thermal protector for single phase motor
- Insulation class: F
- Enclosures class: IPX4
- Max. ambient temperature: +40°C

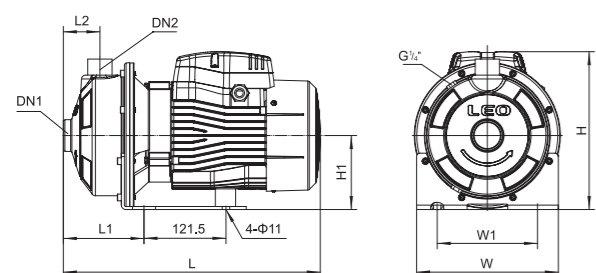
Identification Codes



Technical Data

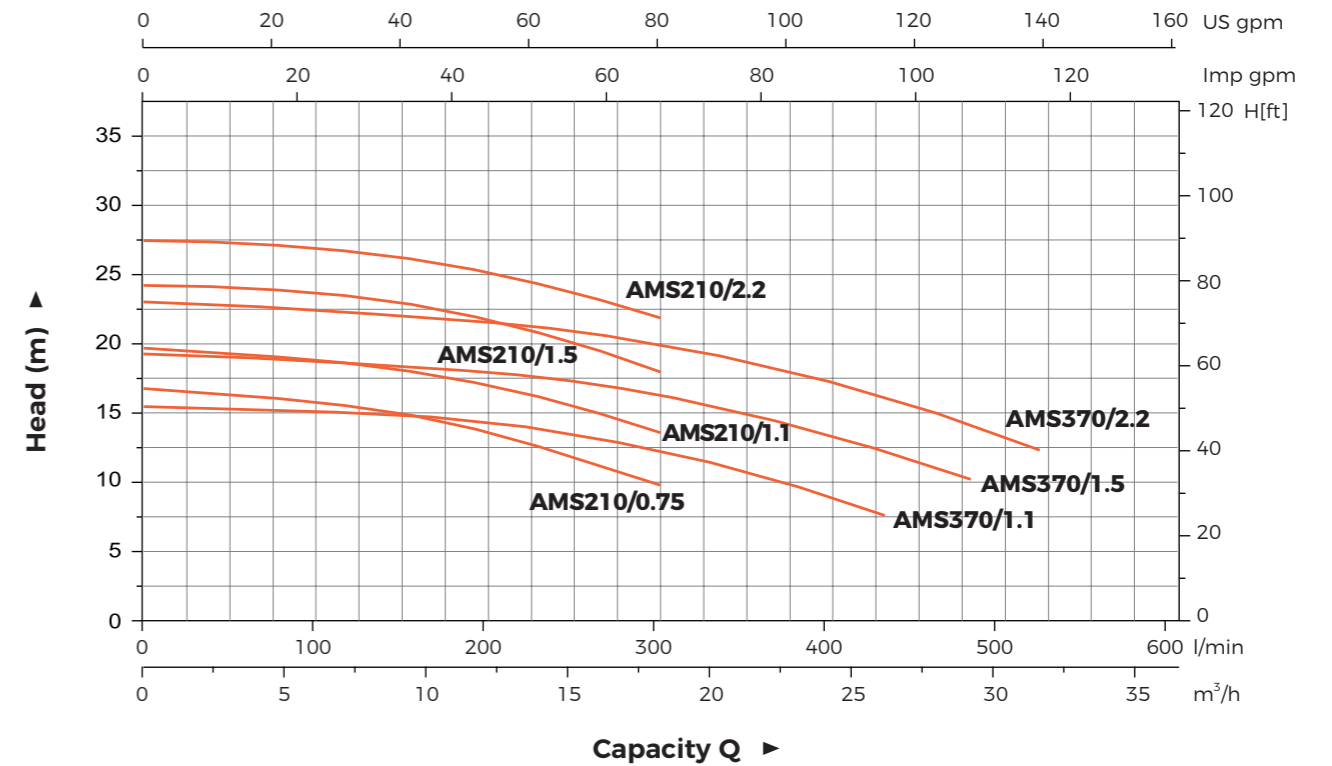
Model		Power		Q(m³/h)		Q(l/min)																
Single Phase	Three Phase	kW	HP	0	1.8	3.6	6	7.2	8.4	9.6	10.8	12	15	18	21	24	26	29	31			
				0	30	60	100	120	140	160	180	200	250	300	350	400	430	480	520			
AMSm210/0.75	AMS210/0.75	0.75	1	H (m)	16.8	-	-	-	15.6	15.2	14.8	14.2	13.6	11.9	9.8	-	-	-	-	-		
AMSm210/1.1	AMS210/1.1	1.1	1.5		19.7	-	-	-	18.7	18.3	18	17.5	17.1	15.6	13.6	-	-	-	-	-		
AMSm210/1.5	AMS210/1.5	1.5	2		24.2	-	-	-	23.5	23.2	22.8	22.4	21.8	20.2	18	-	-	-	-	-		
AMSm210/2.2	AMS210/2.2	2.2	3		27.5	-	-	-	26.7	26.5	26.1	25.7	25.2	23.8	21.9	-	-	-	-	-		
AMSm370/1.1	AMS370/1.1	1.1	1.5		15.4	-	-	-	-	-	-	14.7	14.4	13.5	12.3	10.8	8.9	7.6	-	-		
AMSm370/1.5	AMS370/1.5	1.5	2		19.3	-	-	-	-	-	-	-	18.1	17.3	16.3	15	13.3	12.3	10.2	-		
AMSm370/2.2	AMS370/2.2	2.2	3		23.1	-	-	-	-	-	-	-	21.7	20.9	20	18.8	17.2	16.2	14.2	12.3		

Dimension



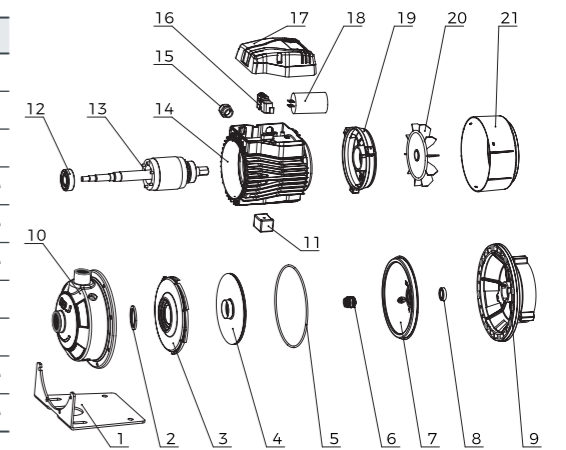
Model	DN1	DN2	L (mm)	W (mm)	H (mm)	L1 (mm)	L2 (mm)	W1 (mm)	H1 (mm)
AMS(m)210/0.75	1 1/2"	1 1/4"	392	210	234	129	55	149	110
AMS(m)210/1.1			392	210	234	129	55	149	110
AMS(m)210/1.5			440	210	250	129	55	149	110
AMS(m)210/2.2	2"	1 1/4"	440	210	250	129	55	149	110
AMS(m)370/1.1			392	210	234	129	55	149	110
AMS(m)370/1.5			440	210	250	129	55	149	110
AMS(m)370/2.2			440	210	250	129	55	149	110

Hydraulic Performance Curves



Material Table

No.	Part	Material	No.	Part	Material
1	Support base	Q235	12	Deep Groove Ball Bearings	
2	Impeller sealing ring	Rubber code	13	Rotor	
3	Diffuser	AISI304	14	Stator	
4	Impeller	AISI304	15	Outlet	Plastic code
5	Q-ring	Rubber code	16	Terminal block/terminal	Plastic code
6	Hechanical seal	Graphite/SiC	17	Terminal box	Plastic code
7	Bracket cover	AISI304	18	Capacitance	
8	Rotary lip seal	Rubber code	19	Rear cover	Aluminum
9	Bracket	Aluminum	20	Fan	Plastic code
10	Pump body	AISI304	21	Fan cover	Plastic code
11	Supporting foot	Rubber code			



Package Information

Model	CW (Kgs)	L (mm)	W (mm)	H (mm)	Quantity (PCS/20' TEU)
AMS(m)210/0.75	14	410	240	270	1104
AMS(m)210/1.1	15	410	240	270	1104
AMS(m)210/1.5	18	465	240	270	968
AMS(m)210/2.2	20	465	240	270	968
AMS(m)370/1.1	15	410	240	270	1104
AMS(m)370/1.5	18	465	240	270	968
AMS(m)370/2.2	20	465	240	270	968

